



COST Info session 2021

How to write a successful application



Reubens Jan

4 May 2021





TRACKING METHODS

HOW WE TRACK AQUATIC ANIMALS IN THE WILD.

RADIO TRANSMITTERS

PIT TAGS

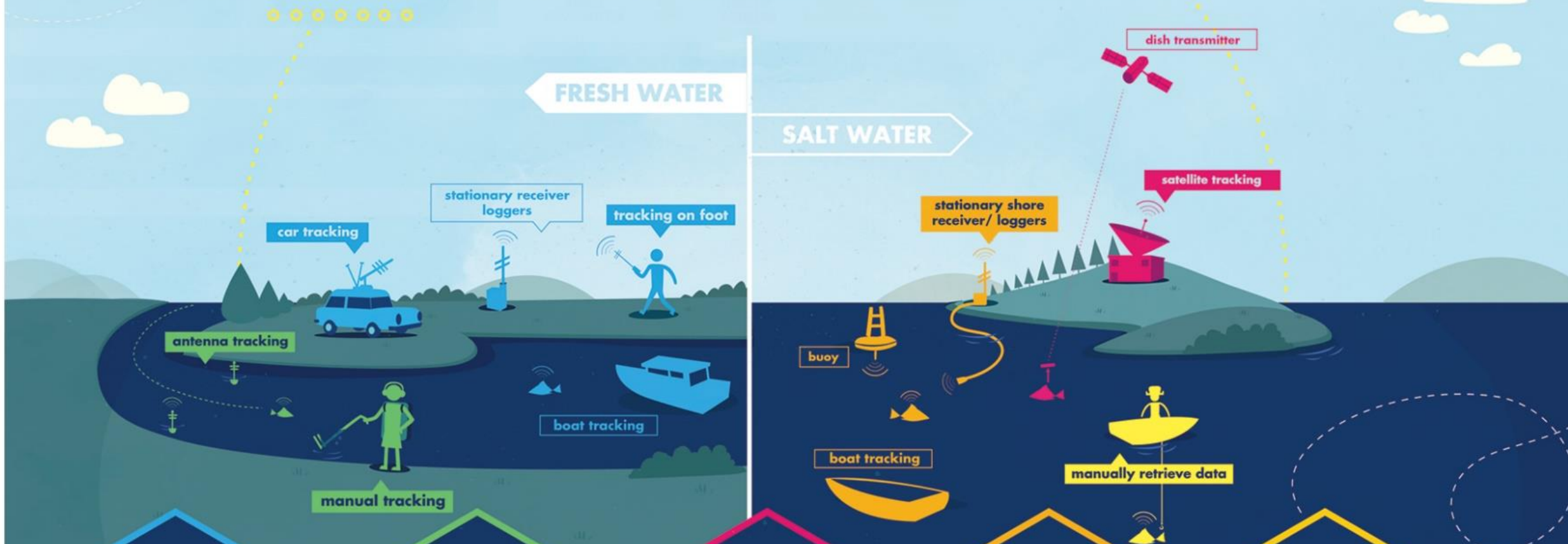
'POP-UP' SATELLITE

ACOUSTIC TRANSMITTERS

ARCHIVAL TAGS

FRESH WATER

SALT WATER



Works in fresh water
Used in rivers, streams, shallow lakes
Transmitter with antenna

Individual coded tags without battery
Charged by electromagnetic field
Long Lasting
Low detection distance (cm - m)

Stores and transmits data
Location and data sent via satellite uplink

Signal propagates through water
Used at sea, estuaries, lakes and rivers
Transmitter without antenna

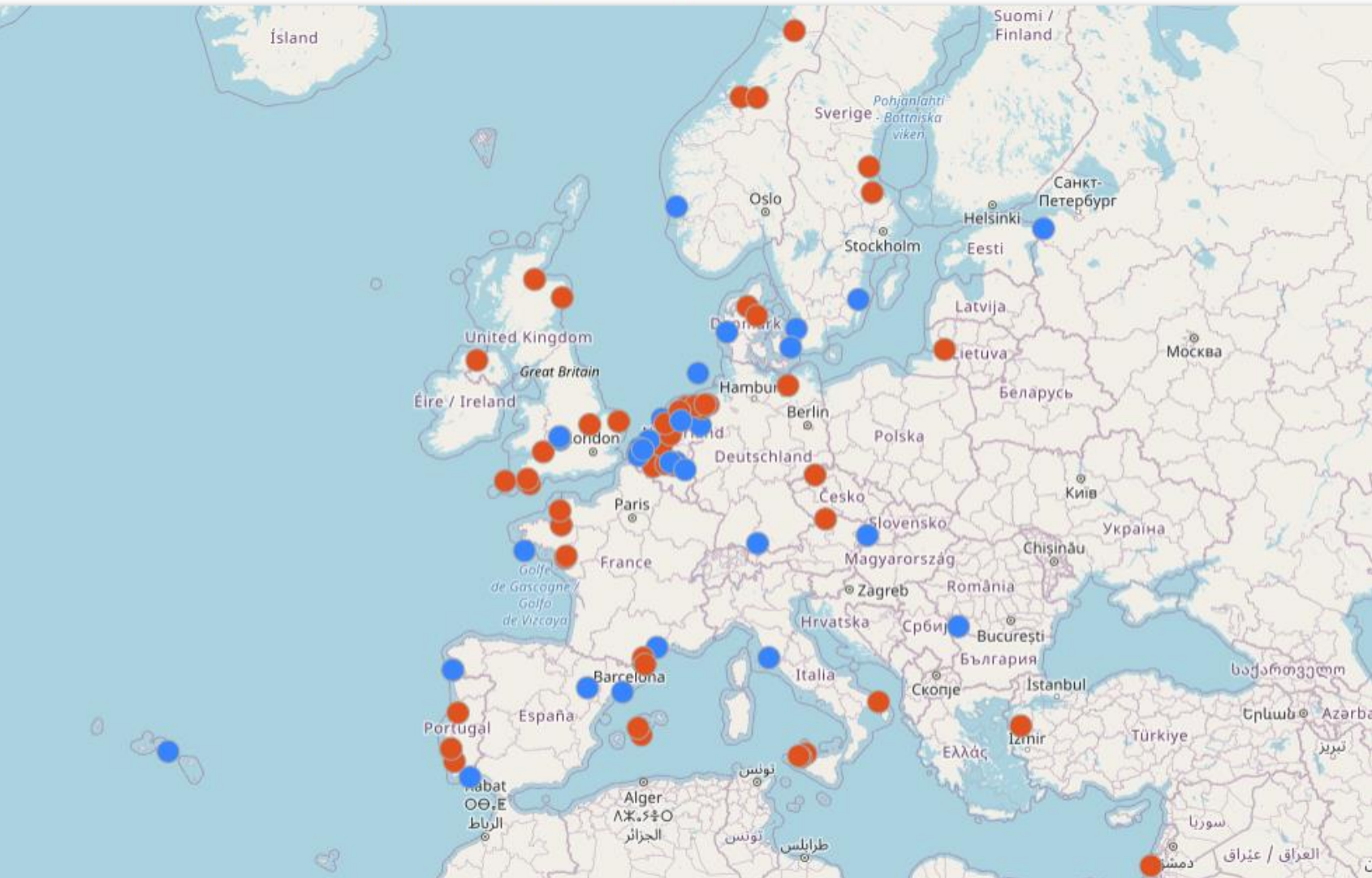
Relatively cheap
Need to recapture fish to retrieve data



ETN - European tracking network



Data platform, featuring **438499871** detections



<http://www.europeantrackingnetwork.org/>

<https://www.cost.eu/actions/CA18102/>

<https://lifewatch.be/ETN/>

438M
detection

250 users

7900
tagged
animals

80 institutes
involved

Tips and Tricks

1. Clear need for a network

- Needs to be feasible
- Clear objectives in mind
- Strong support (our case: 67 proposers)

Current situation:

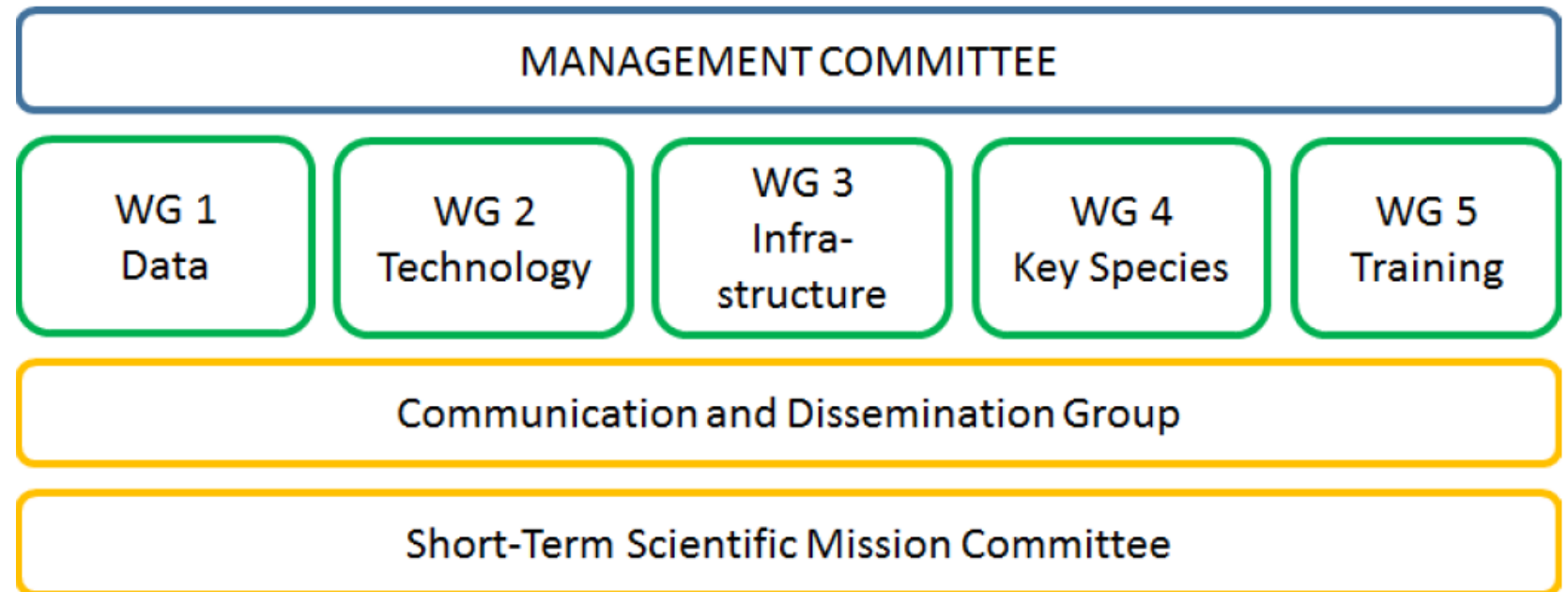
- 38 countries
- 148 participants (but ETN 250)



Tips and Tricks

2. The application

- Be Anonymous!
- Write what they ask!
- Clear structure



Tips and Tricks

3. Profiles make the difference

Content matters, but appearance even more!

→ Keep the COST policies in mind

- Gender balance
- Balance in ITC vs non-ITC and NNC/IPC
- Balance in ECI and seniors!



Tips and Tricks

4. WG leaders will make or break your action!

Profiles matter!



Short-Term Scientific Missions:

ITC Conference Grants are aimed at supporting ECI and PhD students from Participating ITC (Including the topic of the Action that are not organised by the COST Action. Find out more below.

Call for Short Term Scientific Missions

[STSM call for applications](#)

[STSM Vademecum](#)

[STSM application form](#)

[STSM step by step](#)

[STSM evaluation sheet](#)

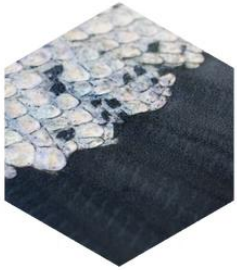
[Eligible funding rates](#)

[Download report STSM](#)

[Memorandum of Understanding](#)

Tips and Tricks

4. WG leaders will make or break your action!



Atlantic salmon | *Salmo salar*



European eel | *Anguilla anguilla*



Atlantic bluefin tuna | *Thunnus thynnus*



Brown trout | *Salmo trutta*



European squid | *Loligo vulgaris*



Atlantic cod | *Gadus morhua*



About

The data management platform is the central data portal of ETN. It gives access to the telemetry data and provides an interface to manage, explore and download the metadata and data. Access is password protected and data moratorium rules are in place. ETN makes a distinction between Restricted and Unrestricted Data. Unrestricted Data can be publicly accessed through the R-shiny data explorer. Restricted Data is all data under moratorium and access, through RStudio, is restricted to Data Collaborators that submitted the data.

Public Data Portal



R-SHINY

Private Data Portal



DATA MANAGEMENT



R-STUDIO

PLATFORM

Statistics



Documents

- [DATA MANUAL →](#)
- [QUICK GUIDE →](#)
- [DATA POLICY →](#)
- [ETN PROJECT TEMPLATE →](#)

The ETN data portal is developed by the Flanders Marine Institute funded by Research Foundation - Flanders (FWO) as part of the Belgian contribution to LifeWatch.

Timing

- Take the time to form your network!
- But work on the proposal with only a handful of people!
- Distribute the tasks





Why COST

- **General**

- Broaden the network
- You suddenly know what plays across Europe

- **Science**

- Collaborations
- Joint papers
- STSMs → core of the action, this is where the science happens!

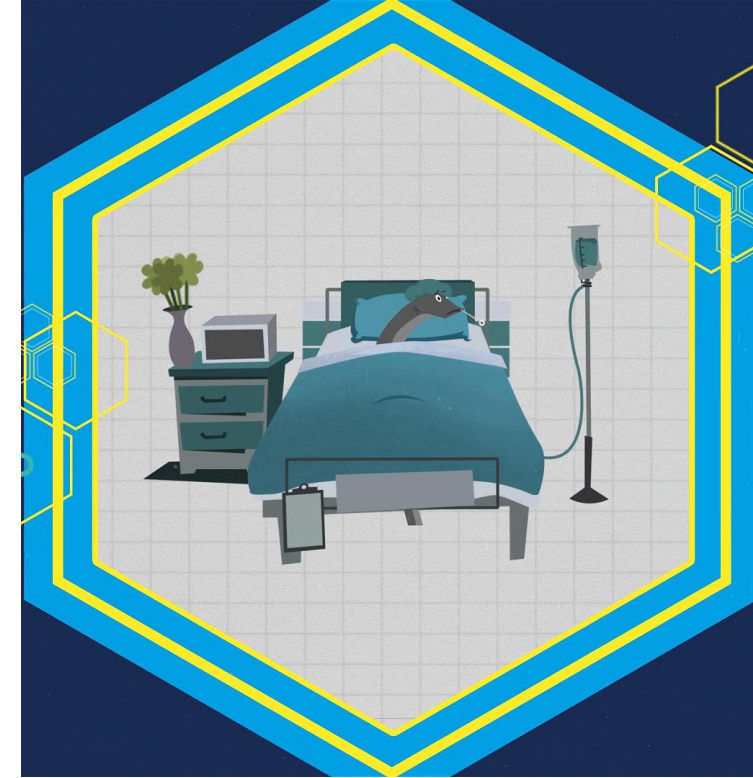
- **Being the chair**

→ Career boost!

- Invited to proposals/projects
- Reference letters for projects = up to date on what's ongoing in Europe and beyond

Time consuming

- YES → approx 2 days/week
 - Chair: needs to fit in the profile of your function
 - WG leaders + STSM + communication manager: they make your action!
 - Several movies, Youtube channel, Twitter account with 700+ followers
 - <http://www.europeantrackingnetwork.org/funding-opportunities>
- Issues/difficulties
 - WG leaders: they make or break your Action!
 - Deliverables
 - Involvement (in Covid situation)



For more information



Jan.reubens@vliz.be



<http://www.europeantrackingnetwork.org/>

AquaticTracking



Vlaams Instituut voor de Zee vzw
Flanders Marine Institute

