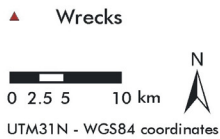
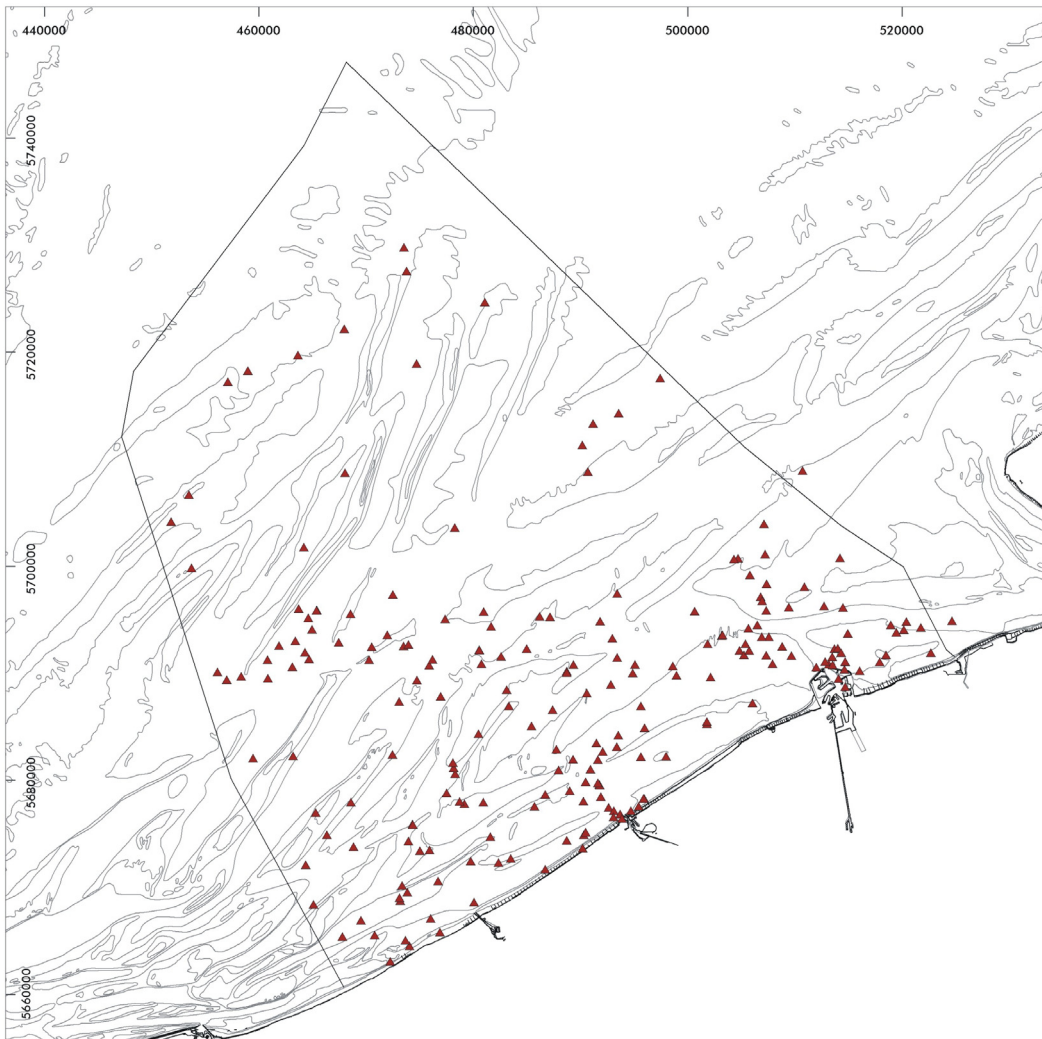


Map I.3.1a. Wrecks: spatial distribution



Original data source: Ministry of the Flemish Community, Department of Environment and Infrastructure, Waterways and Marine Affairs Administration, Division Coast, Hydrographic Office, "Wrecks on the Belgian Continental Shelf adapted up to BAZ 2003/07" (3 June 2003)  
Map preparation: RCMG - Ghent University

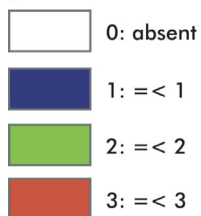
May 2005



Map I.3.1b. Wrecks: use intensity



Use intensity of wrecks  
(number of wrecks/km<sup>2</sup>)



Original data source: Ministry of the Flemish Community, Department of Environment and Infrastructure, Waterways and Marine Affairs Administration, Division Coast, Hydrographic Office, "Wrecks on the Belgian Continental Shelf adapted up to BAZ 2003/07" (3 June 2003)  
Data analysis: Maritime Institute - Ghent University  
RCMG - Ghent University  
Map preparation: RCMG - Ghent University

May 2005

