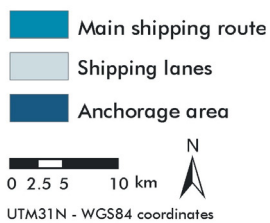


Map I.3.3a. Shipping and anchorage: spatial distribution

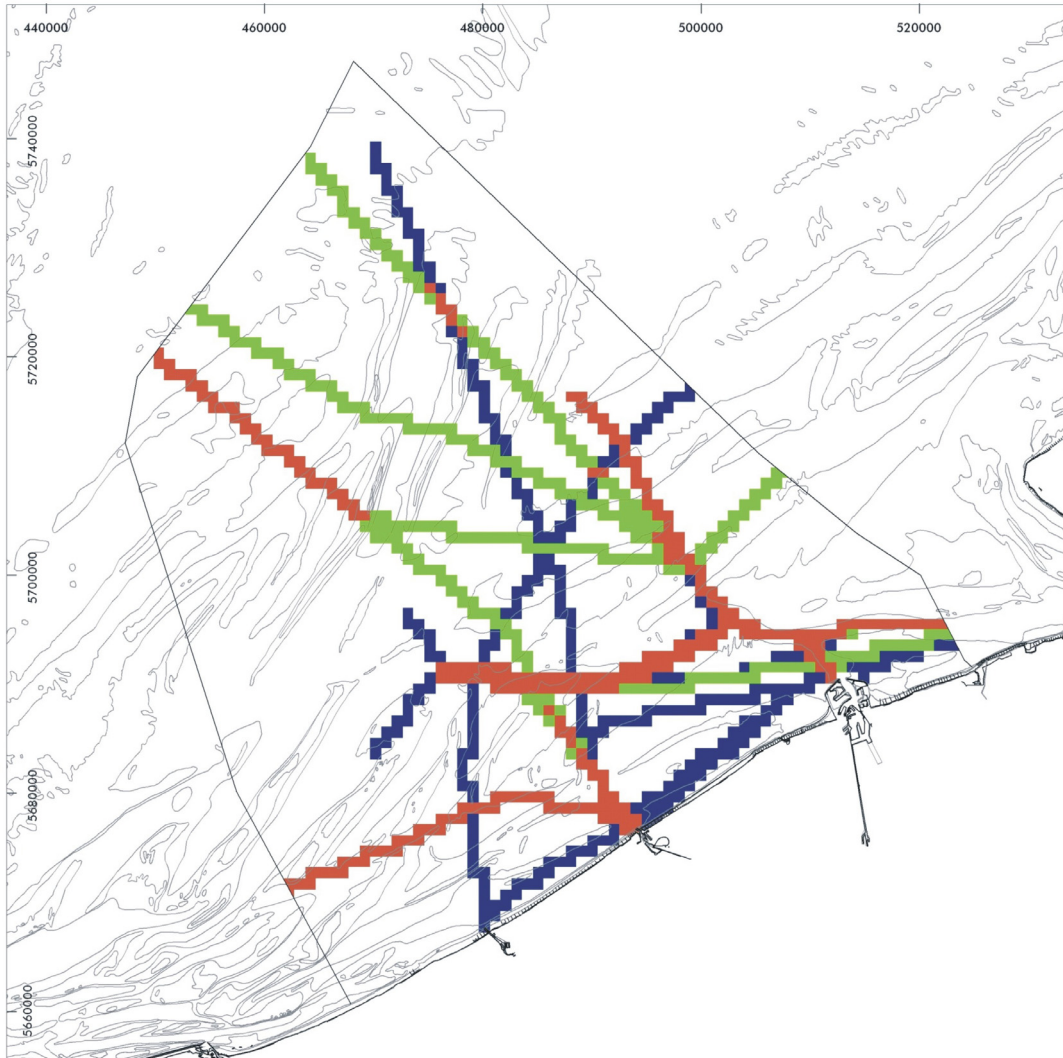


Original data source: International Maritime Organization, Ships' Routing, London, IMO, 6th Edition, 2003  
IVS-SRK (Ministry of the Flemish Community & Dutch Ministry of Transport, Public Works and Water Management)  
Transeuropa Ferries, Ferryways  
Map preparation: RCMG - Ghent University

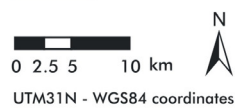
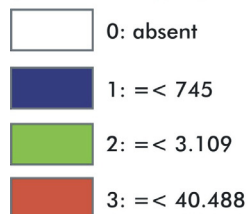
May 2005



Map I.3.3b. Shipping: use intensity



Use intensity of shipping traffic  
(number of shipping vessels/year/km<sup>2</sup>)



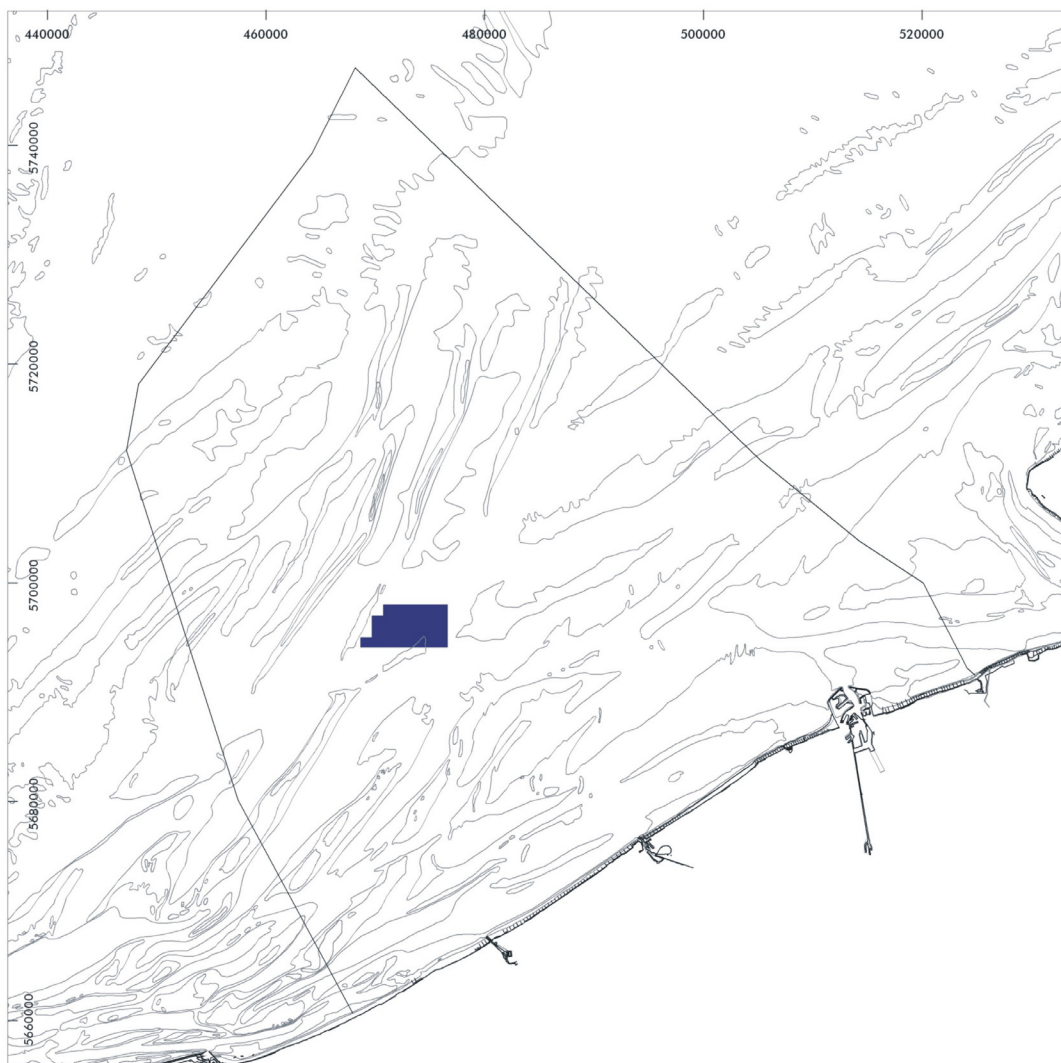
Original data source: IVS-SRK (Ministry of the Flemish Community & Dutch Ministry of Transport, Public Works and Water Management)  
Transeuropa Ferries, Ferryways  
Data analysis: ECOLAS NV  
Maritime Institute - Ghent University  
Map preparation: RCMG - Ghent University

Shipping data cover merchant shipping from  
01 April 2003 - 31 March 2004

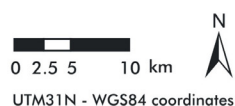
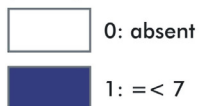
May 2005



Map I.3.3c. Anchorage: use intensity



Use intensity of anchorage sites  
(average number of vessels/day)



Original data source: IVS-SRK (Ministry of the  
Flemish Community & Dutch Ministry of Transport,  
Public Works and Water Management)  
Data analysis: RCMG - Ghent University  
ECOLAS NV  
Maritime Institute - Ghent University  
Map preparation: RCMG - Ghent University

Data cover anchorage activities from 01 April  
2003 - 31 March 2004

May 2005

