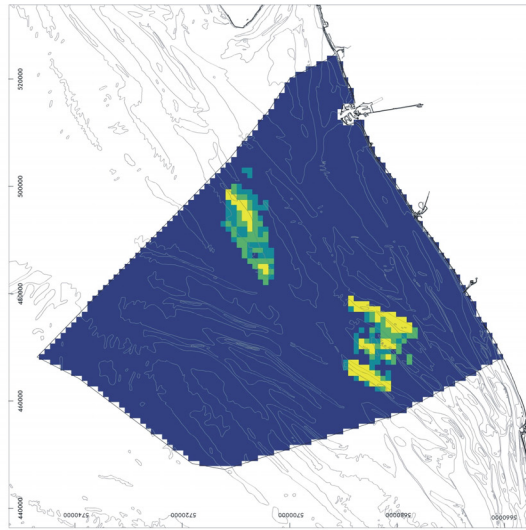
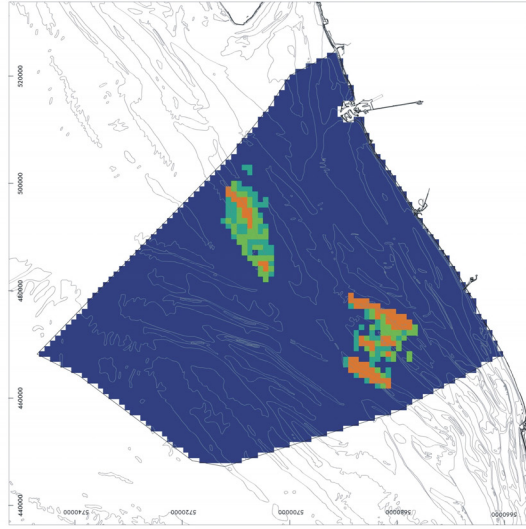


Impact maps - Sand extraction

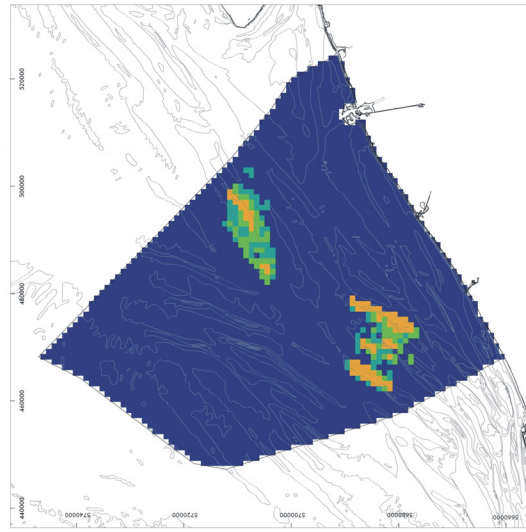
Chemical impact



Ecological impact



Physical impact



Relative impact value



High: 9

Low: 0



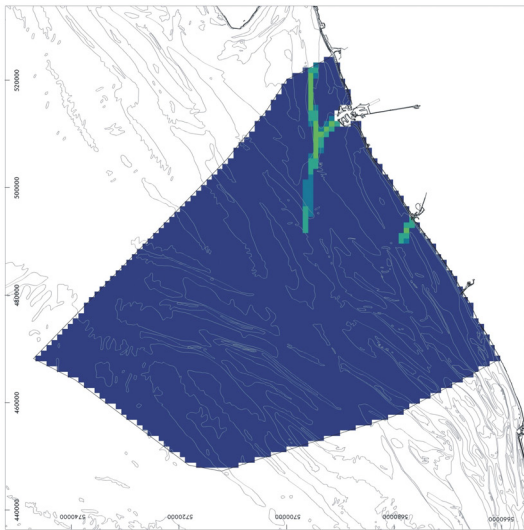
Original data source: Federal Public Service Economy, SMEs, Self-employed and Energy
 Ministry of the Flemish Community, Department of Environment and Infrastructure,
 Waterways and Marine Affairs Administration, Division Coast, Hydrographic Office
 Impact analysis: ECOLAS NV
 Map preparation: RCMG - Ghent University

Data cover sand extraction activities from 01 June 2002 - 31 December 2003

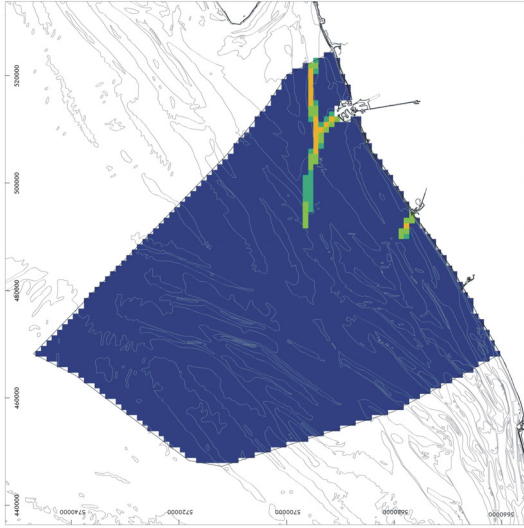
May 2005

Impact maps - Dredging

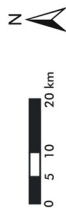
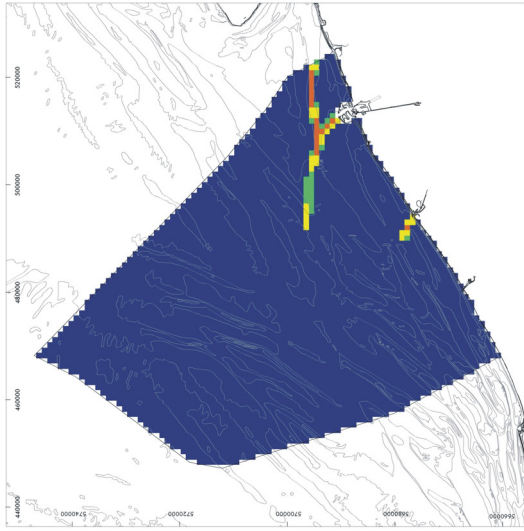
Chemical impact



Ecological impact



Physical impact



Relative impact value



High: 9

Low: 0

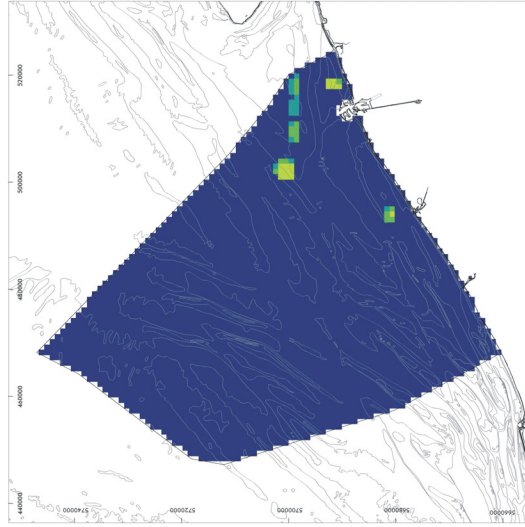


Original data source: Ministry of the Flemish Community, Department of Environment and Infrastructure, Waterways and Marine Affairs Administration, Division Coast, Hydrographic Office & Maritime Entrance Division
 GEMS International N.V.
 Impact analysis: ECOLAS NV
 Map preparation: RCMG - Ghent University

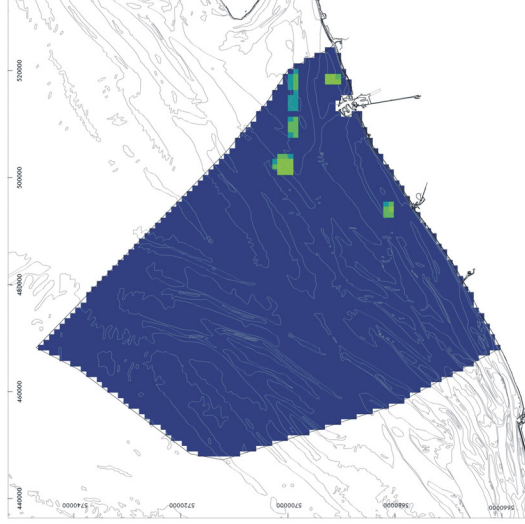
Data cover dredging activities from 01 April 1998 - 31 March 2003
 May 2005

Impact maps - Disposal of dredged material

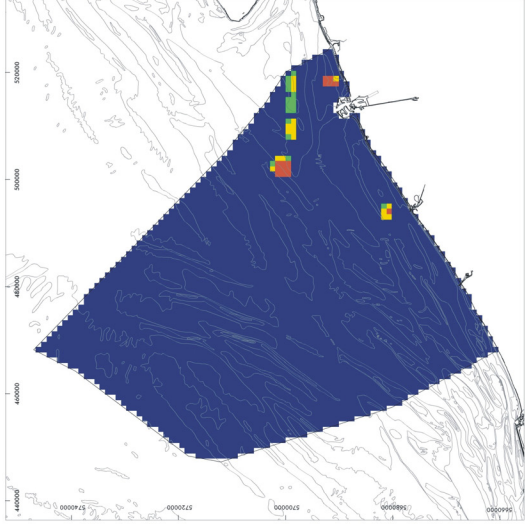
Chemical impact



Ecological impact



Physical impact



Relative impact value



Original data source: Ministry of the Flemish Community, Department of Environment and Infrastructure, Waterways and Marine Affairs Administration, Division Coast, Hydrographic Office & Maritime Entrance Division
 GEMS International N.V.
 Impact analysis: COLAS NV
 Map preparation: RCMG - Ghent University

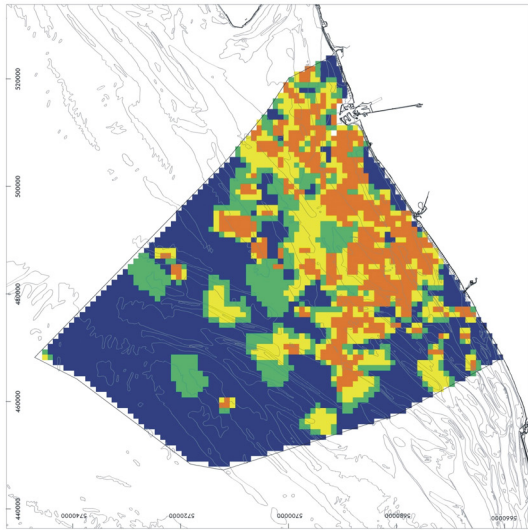
Data cover disposal activities from 01 April 1998 - 31 March 2003

May 2005

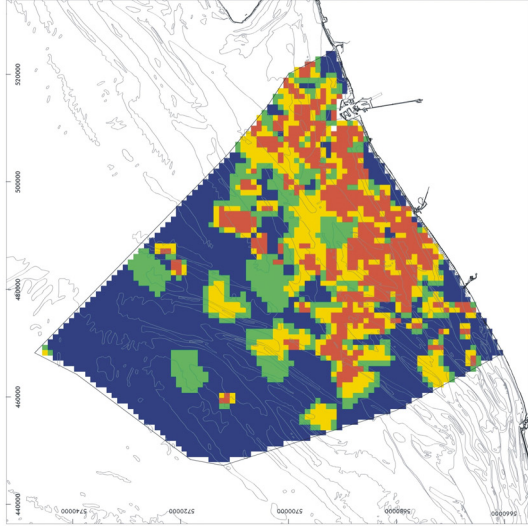


Impact maps - Commercial fisheries

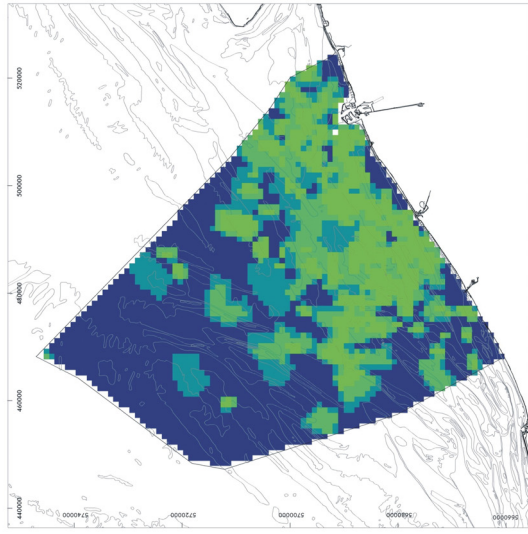
Chemical impact



Ecological impact



Physical impact



Relative impact value



High: 9

Low: 0

Original data source: Institute for Nature Conservation
Impact analysis: ECOLAS NV
Map preparation: RCMG - Ghent University

Data cover observed commercial fishery activities from 30 September 1992 - 25 July 2003

May 2005

