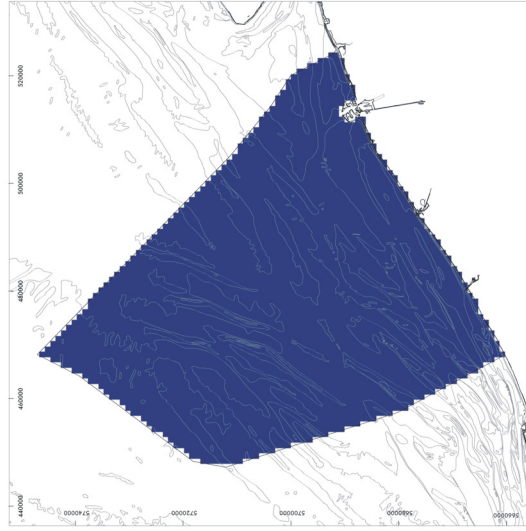
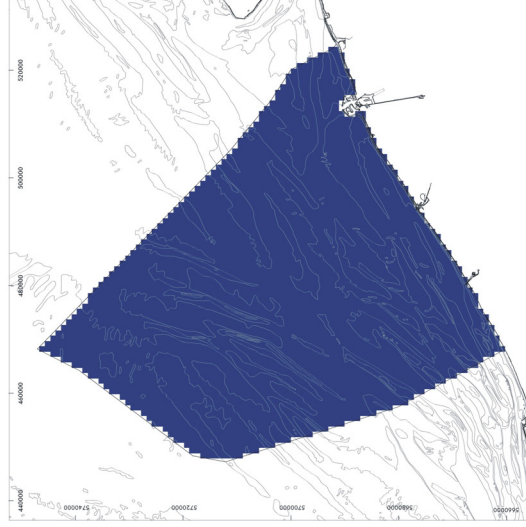


Impact maps - Electricity and telecom cable exploitation

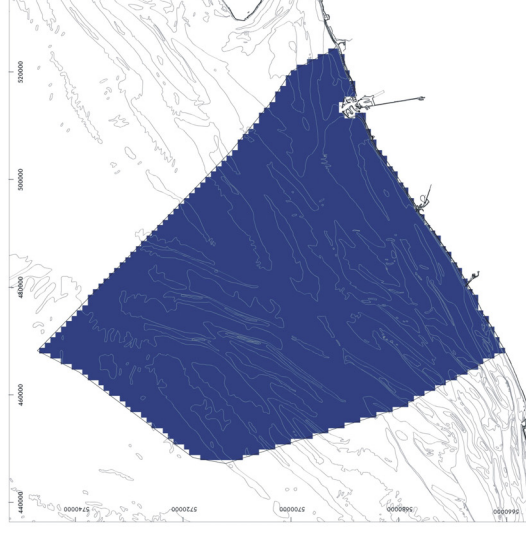
Chemical impact



Ecological impact



Physical impact



Relative impact value



High: 9

Low: 0



Original data source: Federal Public Service Economy, SMEs, Self-employed and Energy
 Ministry of the Flemish Community, Department of Environment and Infrastructure,
 Waterways and Marine Affairs Administration, Division Coast, Hydrographic Office
 C-power NV

TV Electrabel - Ondernemingen Jan De Nul (Project Seanergy)

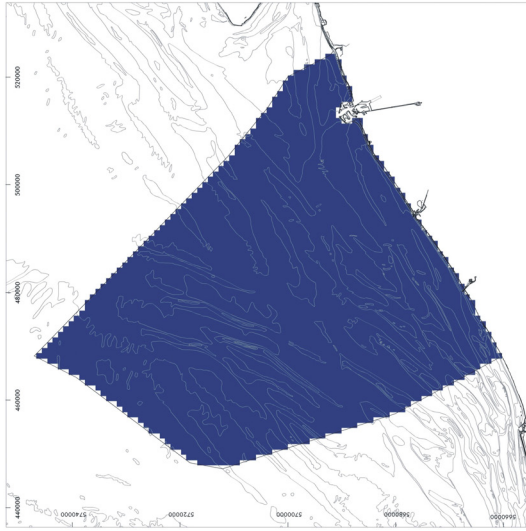
Impact analysis: ECOLAS NV

Map preparation: RCMG - Ghent University

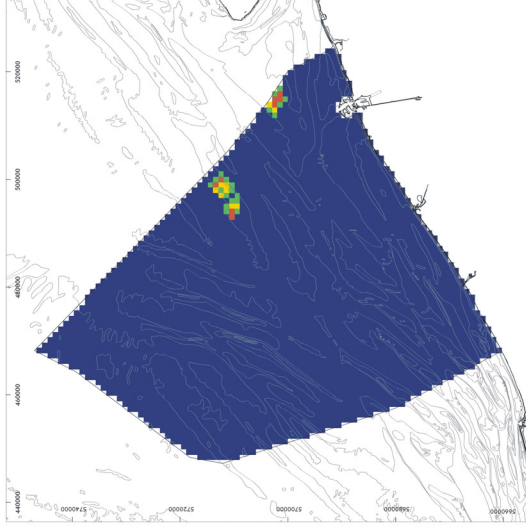
May 2005

Impact maps - Wind turbine construction

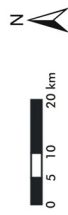
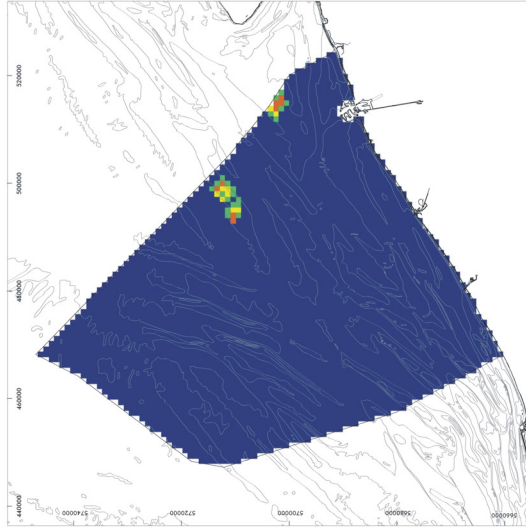
Chemical impact



Ecological impact



Physical impact



Relative impact value



High: 9

Low: 0

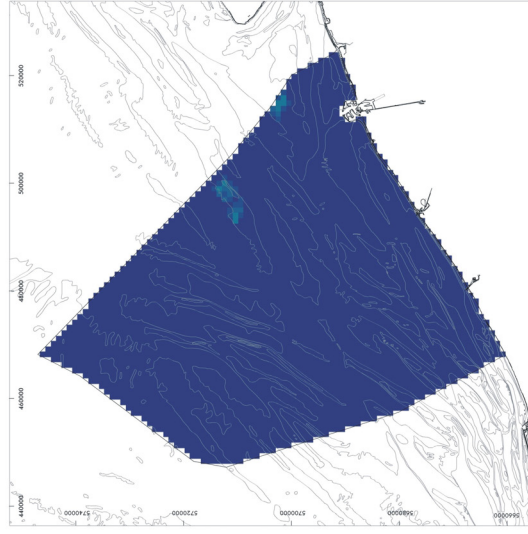


Original data source: C-power NV
TV Electrabel - Ondernemingen Jan De Nul (Project Seanergy)
Impact analysis: ECOLAS NV
Map preparation: RCMG - Ghent University
May 2005

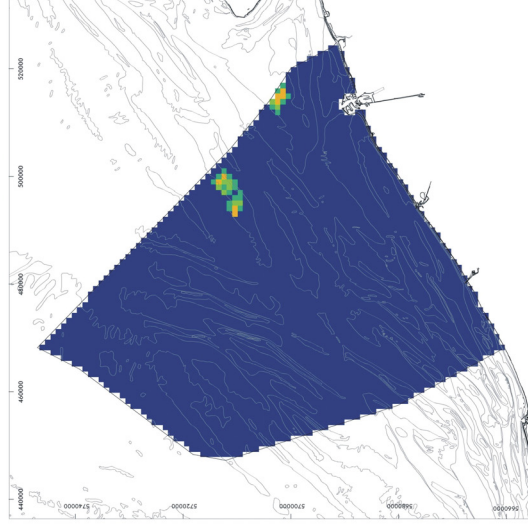
Impact maps - Wind turbine exploitation

Map II.3I

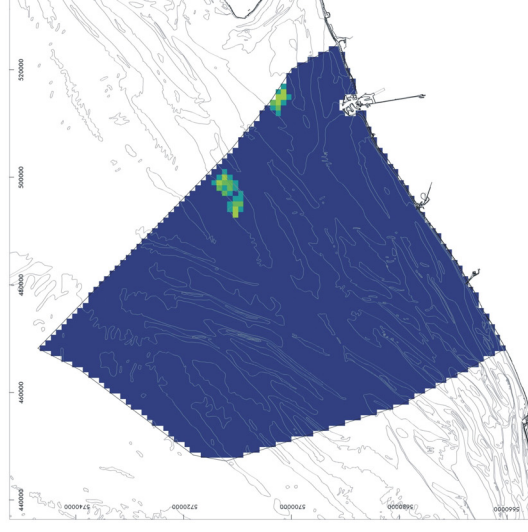
Chemical impact



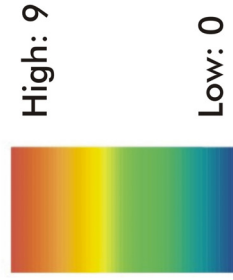
Ecological impact



Physical impact



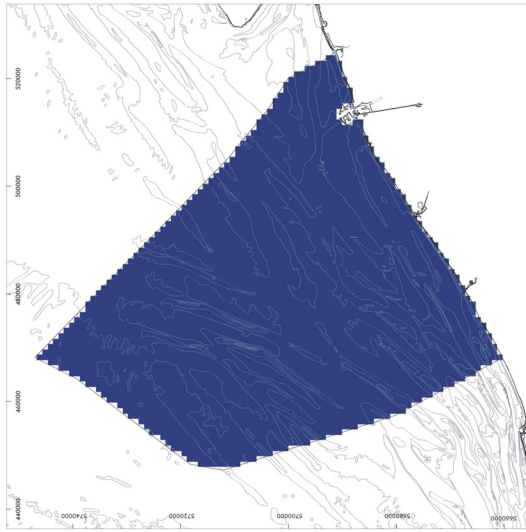
Relative impact value



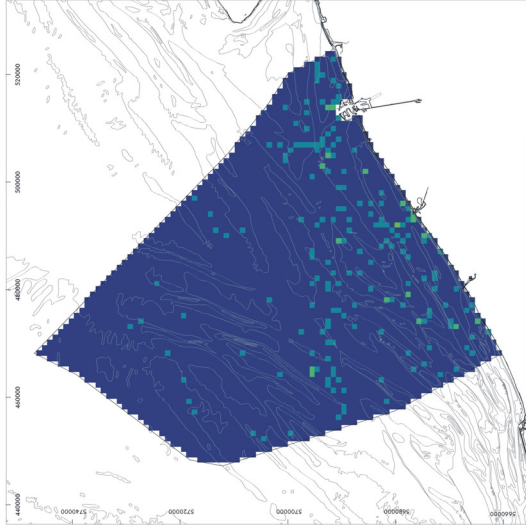
Original data source: C-power NV
 TV Electrabel - Ondernemingen Jan De Nul (Project Seanergy)
 Impact analysis: ECOLAS NV
 Map preparation: RCMG - Ghent University
 May 2005

Impact maps - Wrecks

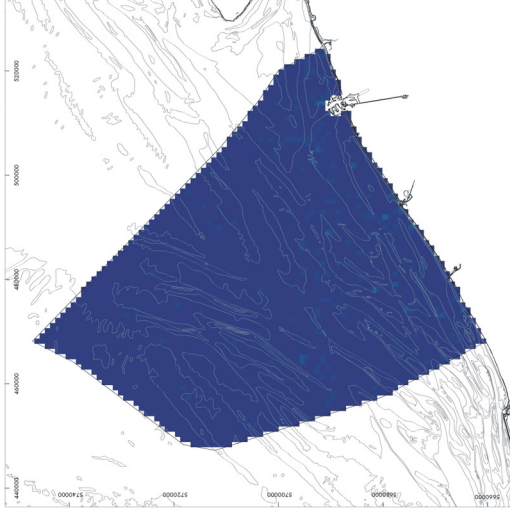
Chemical impact



Ecological impact



Physical impact



Relative impact value



High: 9

Low: 0



Original data source: Ministry of the Flemish Community, Department of Environment and Infrastructure, Waterways and Marine Affairs Administration, Division Coast, Hydrographic Office, "Wrecks on the Belgian Continental Shelf adapted up to BAZ 2003/07" (3 June 2003)

Impact analysis: ECOLAS NV

Map preparation: RCMG - Ghent University

May 2005