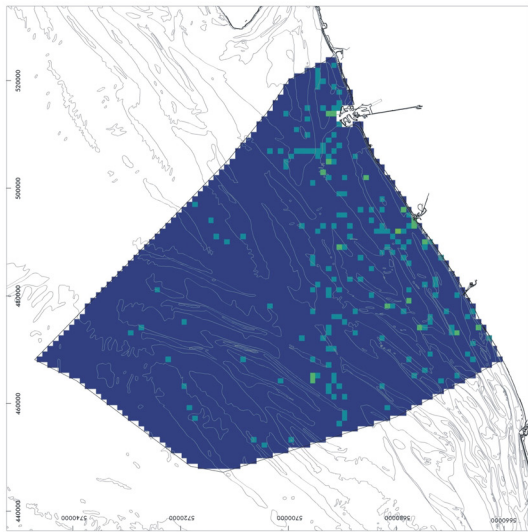
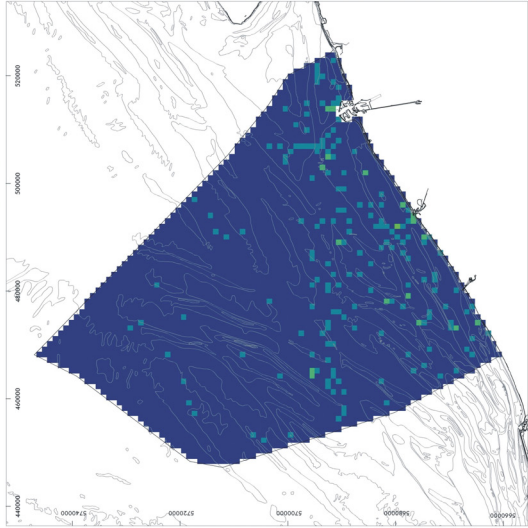


Impact maps - Wreck salvage

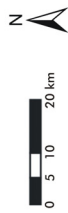
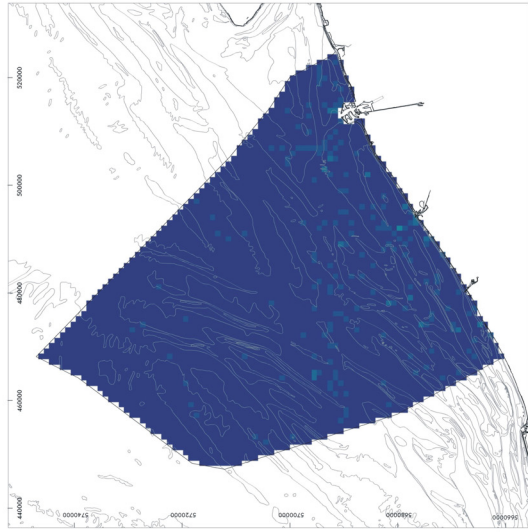
Chemical impact



Ecological impact



Physical impact



Relative impact value



High: 9

Low: 0



Original data source: Ministry of the Flemish Community, Department of Environment and Infrastructure, Waterways and Marine Affairs Administration, Division Coast, Hydrographic Office, "Wrecks on the Belgian Continental Shelf adapted up to BAZ 2003/07" (3 June 2003)

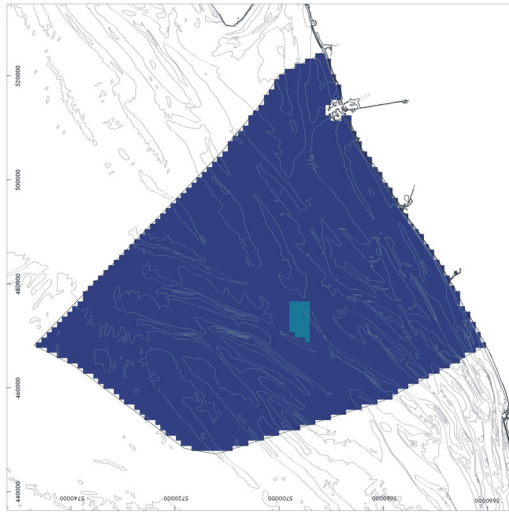
Impact analysis: ECOLAS NV

Map preparation: RCMG - Ghent University

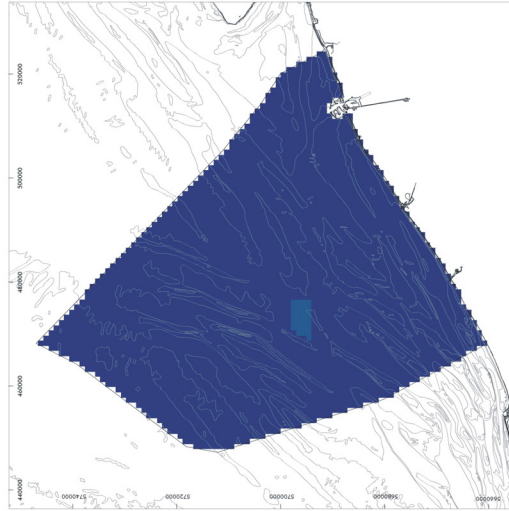
May 2005

Impact maps - Anchorage area

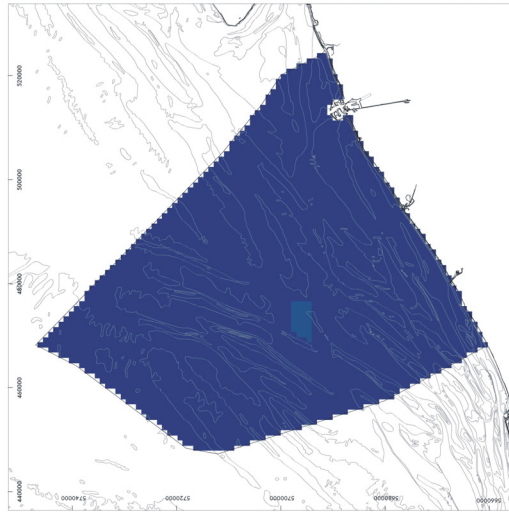
Chemical impact



Ecological impact



Physical impact



Relative impact value



High: 9

Low: 0



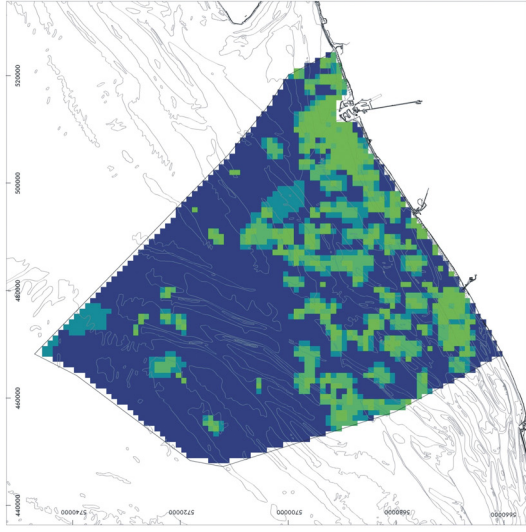
Original data source: IVS-SRK (Ministry of the Flemish Community & Dutch Ministry of Transport, Public Works and Water Management)
Impact analysis: ECOLAS NV
Map preparation: RCMG - Ghent University

Data cover anchorage activities from 01 April 2003 - 31 March 2004

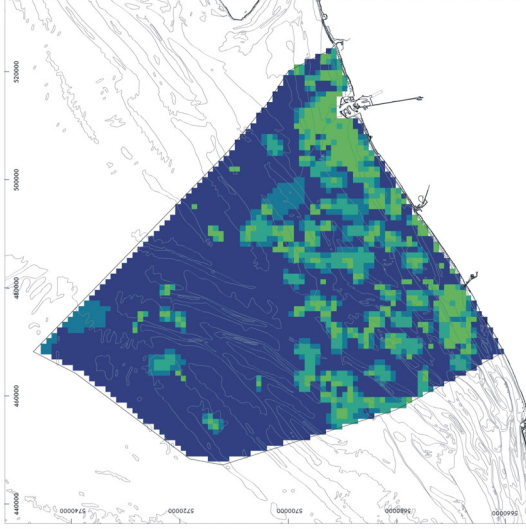
May 2005

Impact maps - Recreational fisheries

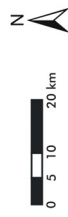
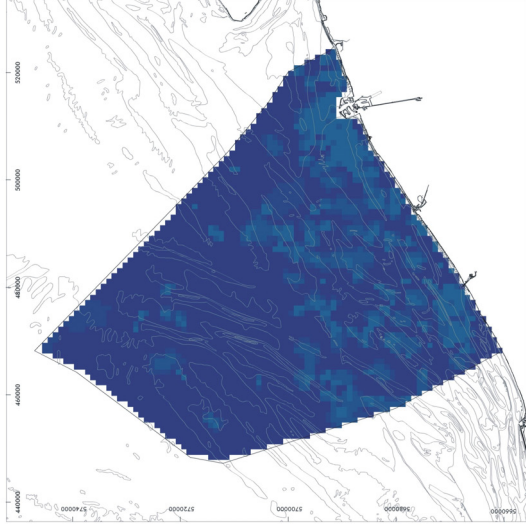
Chemical impact



Ecological impact



Physical impact



Relative impact value



High: 9

Low: 0

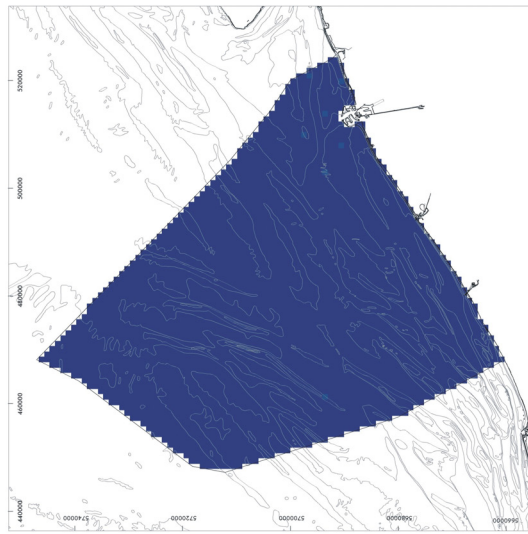
Original data source: Institute for Nature Conservation
Impact analysis: ECOLAS NV
Map preparation: RCMG - Ghent University

Data cover observed recreational fishery activities from 30 September 1992 - 25 July 2003
May 2005

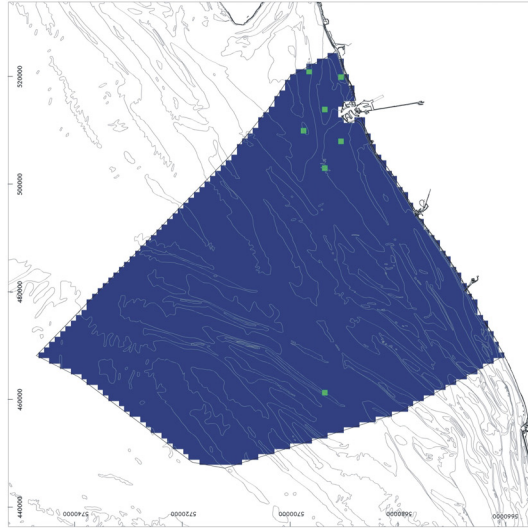


Impact maps - Weather mast construction

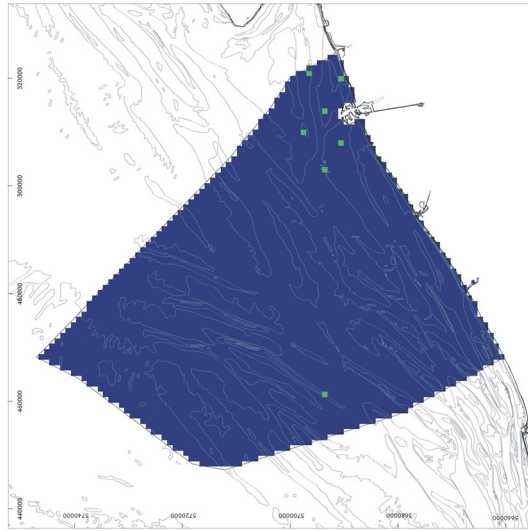
Chemical impact



Ecological impact



Physical impact



Relative impact value



High: 9

Low: 0



Original data source: Ministry of the Flemish Community, Department of Environment and Infrastructure, Waterways and Marine Affairs Administration, Division Coast, Hydrographic Office & Hydrometeo, "Overview of positions (WGS84) weather masts and radar mast Oost Dyck on nautical maps"

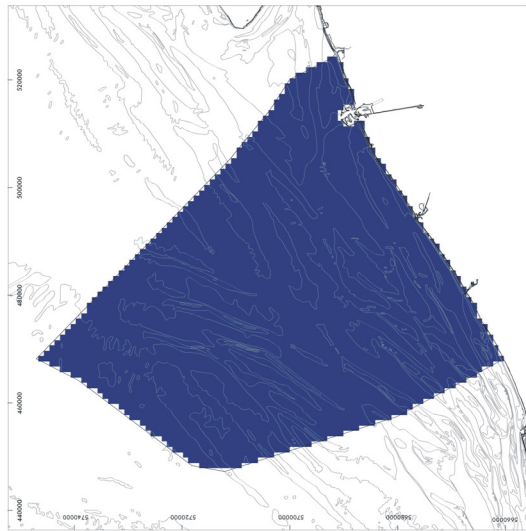
Impact analysis: ECOLAS NV

Map preparation: RCMG - Ghent University

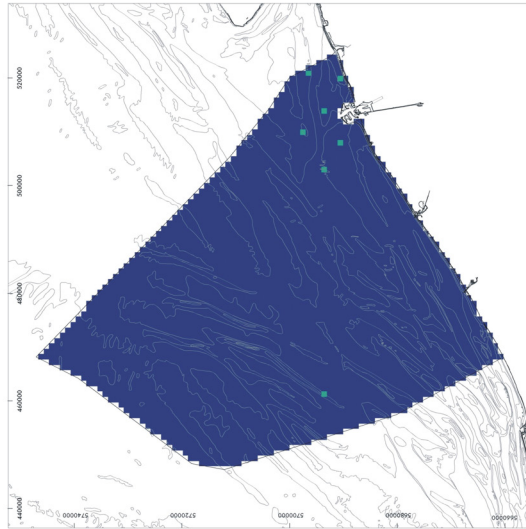
May 2005

Impact maps - Weather mast exploitation

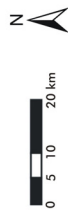
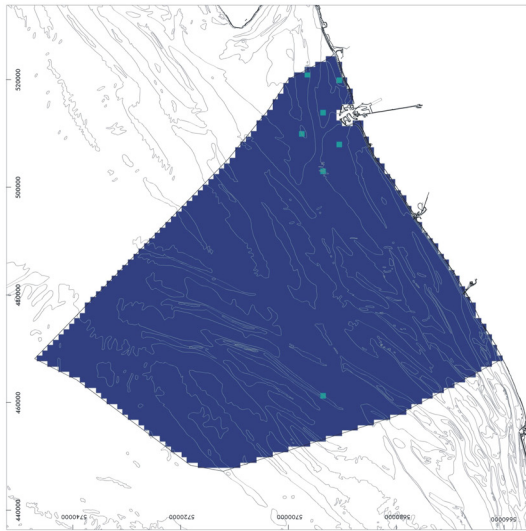
Chemical impact



Ecological impact



Physical impact



Relative impact value



High: 9

Low: 0



Original data source: Ministry of the Flemish Community, Department of Environment and Infrastructure, Waterways and Marine Affairs Administration, Division Coast, Hydrographic Office & Hydrometeo, "Overview of positions (WGS84) weather masts and radar mast Oost Dyck on nautical maps"

Impact analysis: ECOLAS NV

Map preparation: RCMG - Ghent University

May 2005