


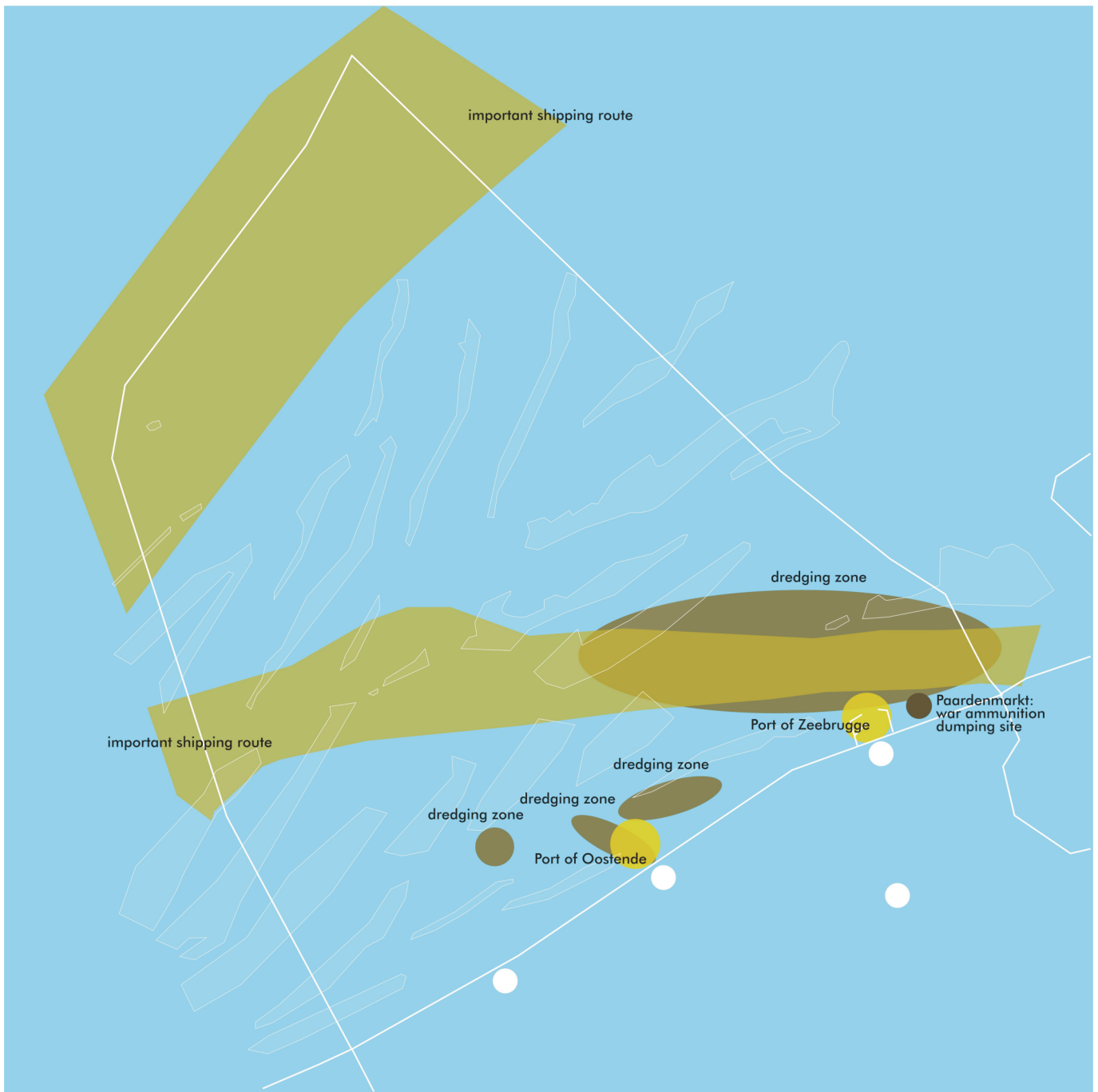


Map III.1.2.3f. Location of ship wrecks

(Original data source: Ministry of the Flemish Community, Department of Environment and Infrastructure, Waterways and Marine Affairs Administration, Division Coast, Hydrographic Office, "Wrecks on the Belgian Continental Shelf adapted up to BAZ 2003/07" (3 June 2003);

Structure map: Maritime Institute - Gent University)

- 
areas with a high concentration of ship wrecks
- 
areas with a concentration of ship wrecks
- 
solitary ship wrecks



Map III.1.2.3g. Pollution and disturbance of the seabed

(Structure map: Maritime Institute - Gent University, based on information from Chapter II.3 of this report)

-  former dumping site of war ammunition
-  pollution in the harbour
-  pollution and disturbance caused by dredging
-  pollution caused by shipping